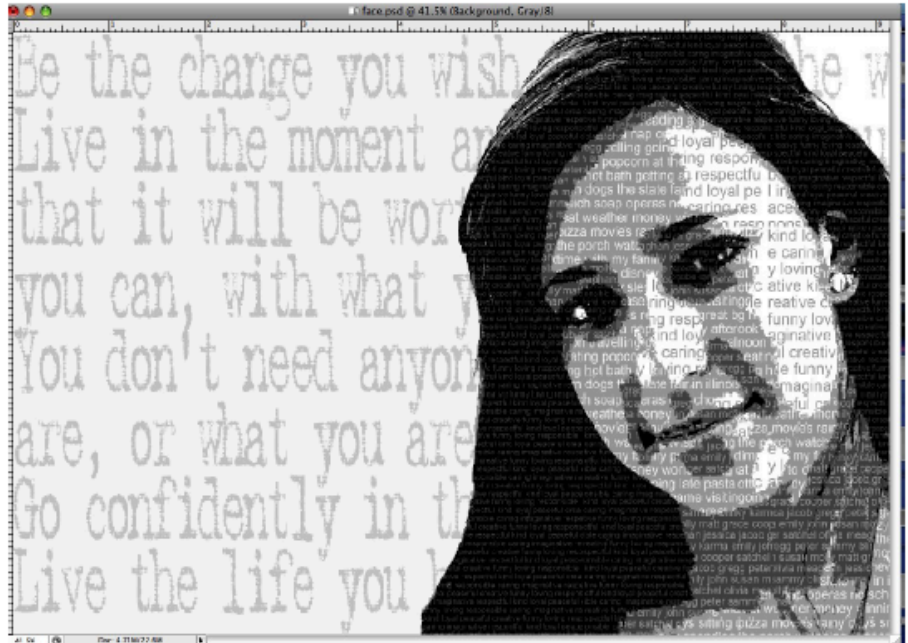


# Express Yourself

## Project Outline

The Express Yourself Photoshop project provides students with the opportunity to apply their newly learned Photoshop skills onto a project which will showcase how they perceive themselves on a day to day basis. The project will embrace artistic, creative and cultural components while allowing students reflect on the different aspects on the project. Students are going to take themselves to a whole new level- culturally and artistically.



## Project Timeline

1. Take individual shot in front of green screen.
2. Complete the "Express Yourself" description words (page 2)
3. Edit self portrait (page 3 - 15)
4. Combine self portrait with description list (page 3 - 15)
5. Save for Print and Web
6. Share with the World!!

## Project Goals

1. Students will be able to communicate through art how they perceive themselves in the world.
2. Students will be able to confidently apply the Photoshop skills they learned in earlier lessons to create a professional digitally designed self portrait.
3. Students will collaborate with other students to reflect upon the work they completed.

# Express Yourself

---

## Description Words & Quotes

Directions: Using a Google Document create a list of words which describes you in relationship to the column titles. You must choose a minimum of 10 words for each section. In addition, include a minimum of three quotes which also represents you a day to day basis. Be Creative! Using thesaurus.com may help.

<b>Yourself</b>	<b>Family and Friends</b>	<b>Your Likes/ Interests</b>	<b>Education</b> <small>(school, culture, religion)</small>

Quote #1:

Quote #2:

Quote #3:

## Express Yourself

---

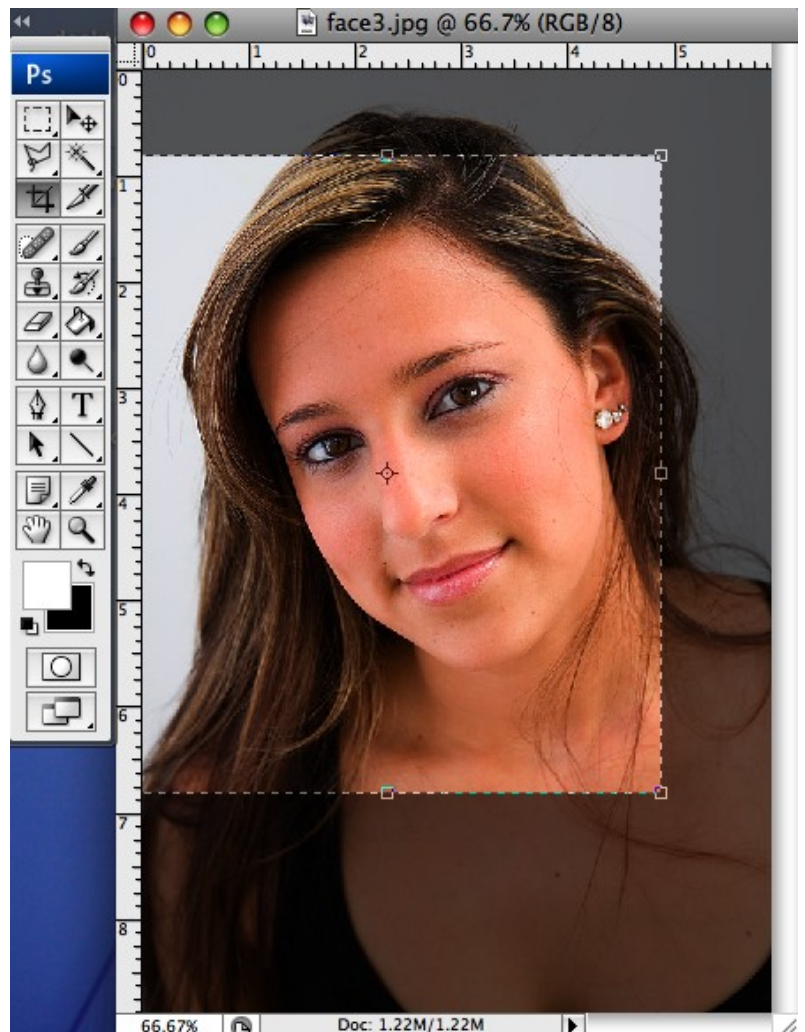
### Take a photo of yourself.

Get someone to take a photo of you - a head shot. Make sure that the background is a solid/neutral color and that you are not in a shadow.



## Crop the photo

Use the crop tool and zoom in on your portrait.

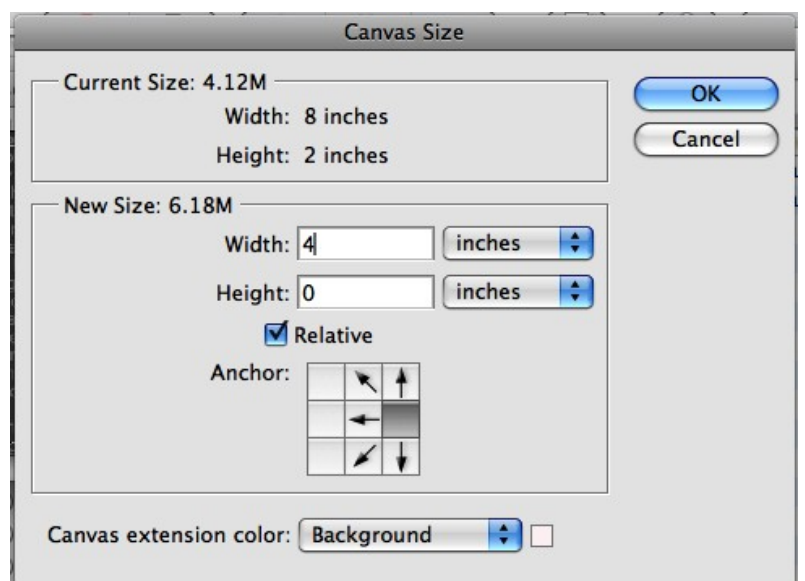


## Create a larger canvas

Go to **Image>Canvas Size** to adjust the canvas size to make it larger on one side.

Add about 4 inches to one side of your portrait.

Make sure you choose the side where it's most natural to add space.

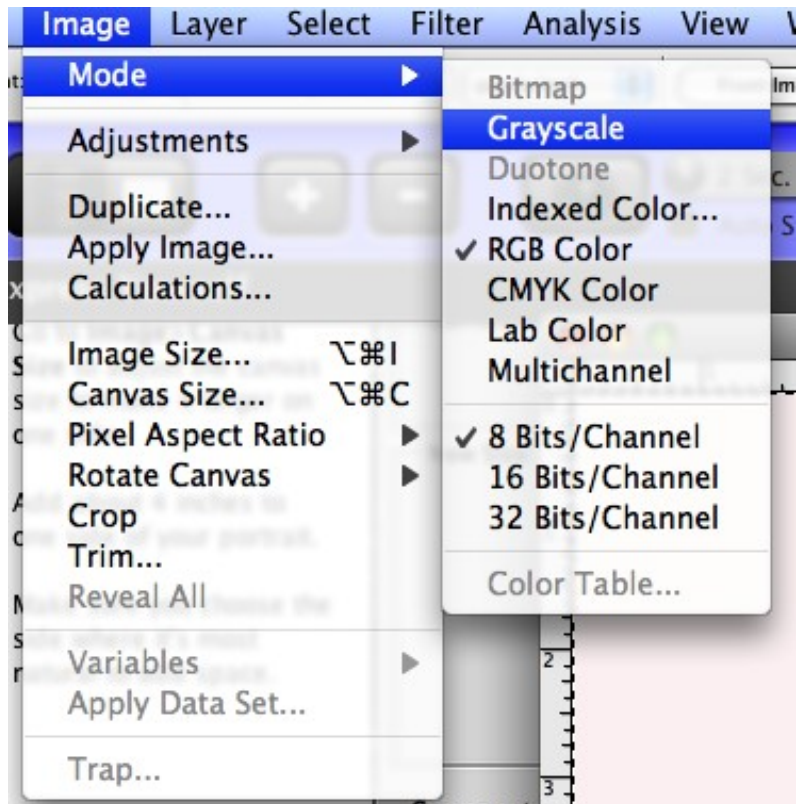


Make sure you choose the side where it's most natural to add space



## Change to Grayscale Mode

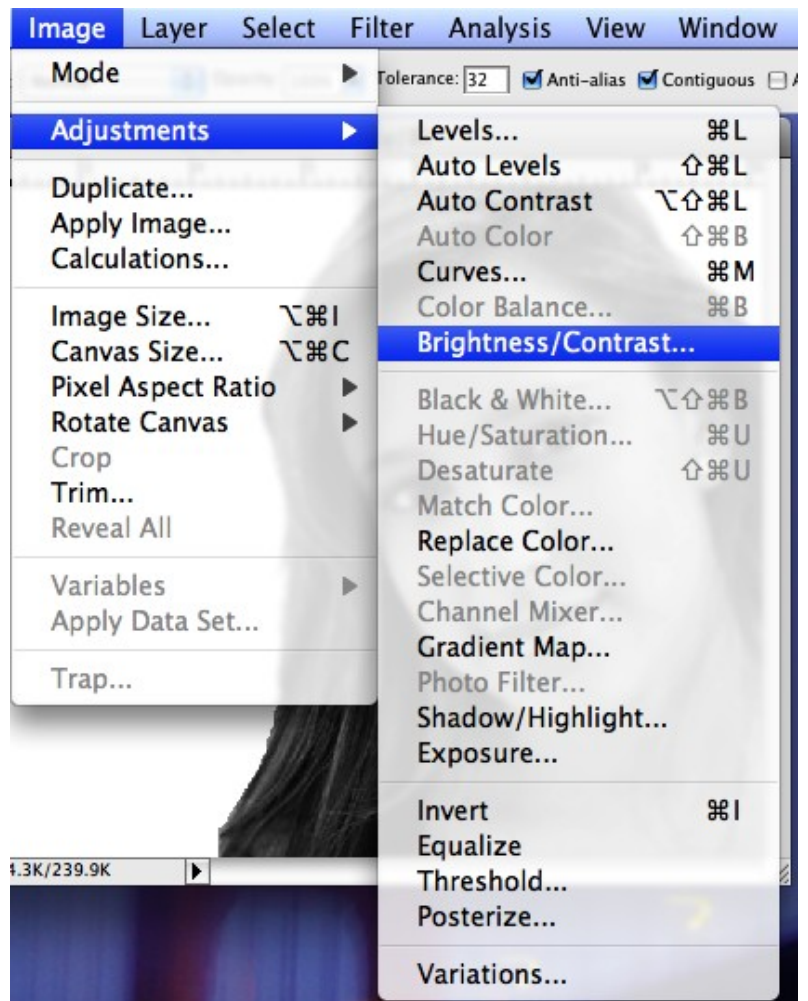
Image>Mode>Grayscale



## Up the Contrast on the image

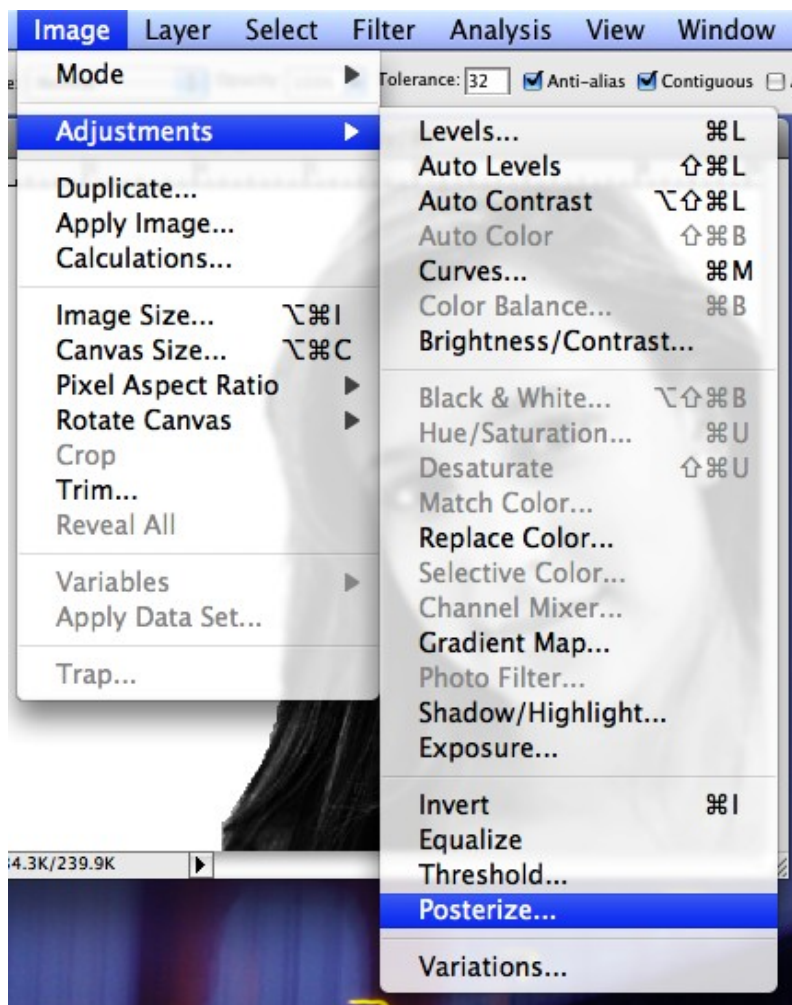
Go to  
Image>Adjustments>Brightness/Contrast

Move the Contrast slider to the right to increase the contrast.

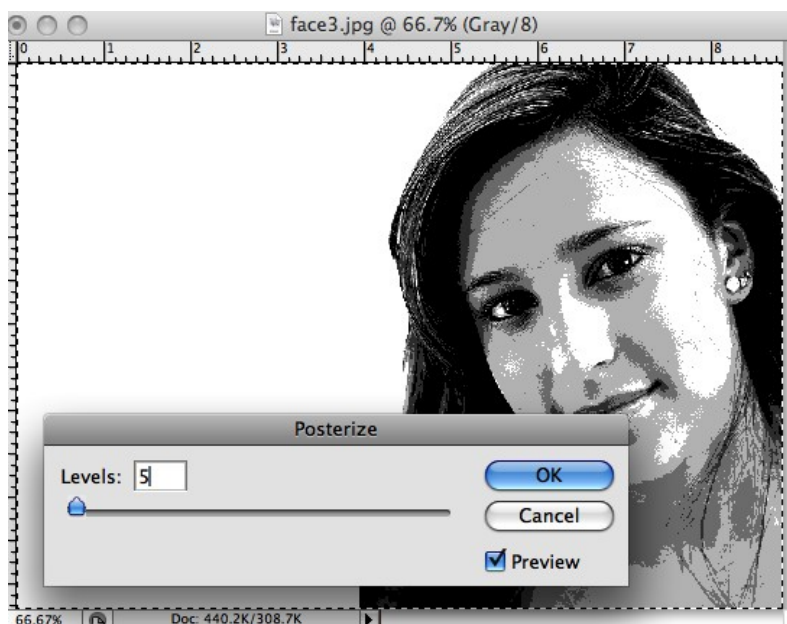


## Posterize and Simplify

Go to Image>Adjustments>Posterize

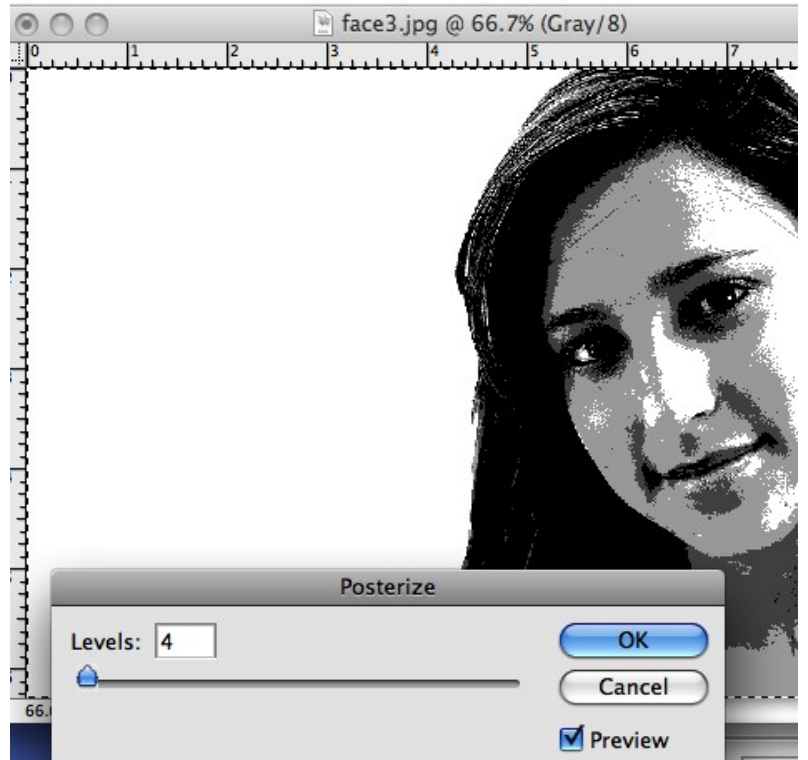


On the posterize screen, select a level of 5 or 6 - make sure you keep some of the details on the face.



## Posterize again

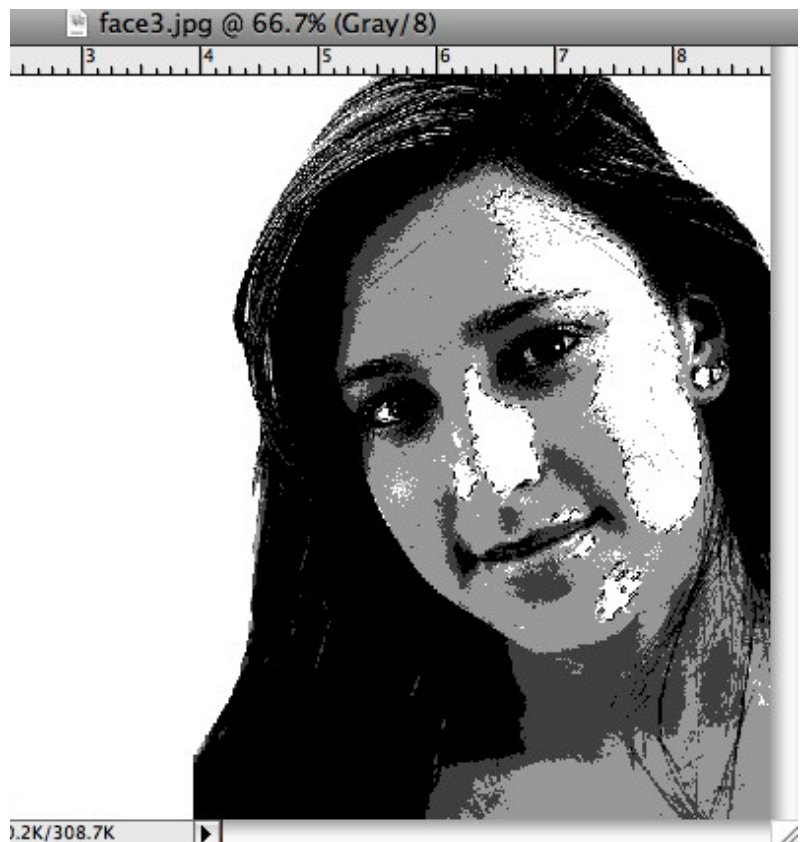
Go to Image>Adjustments>Posterize again, but this time, change the level to



## Separate the values

Use the magic wand tool and select the lightest values on the face. Copy and paste onto a new layer.

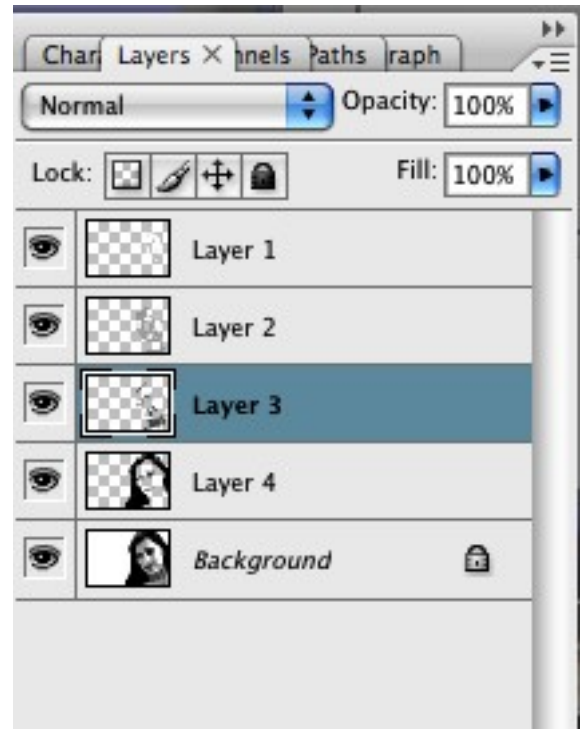
Continue doing this, selecting the different values, copying and pasting them onto a new layer.





When you get done, you'll have 4 **new** layers, each with a different value.

Save your image as  
yourname.face.psd  
DO NOT FLATTEN THE IMAGE.

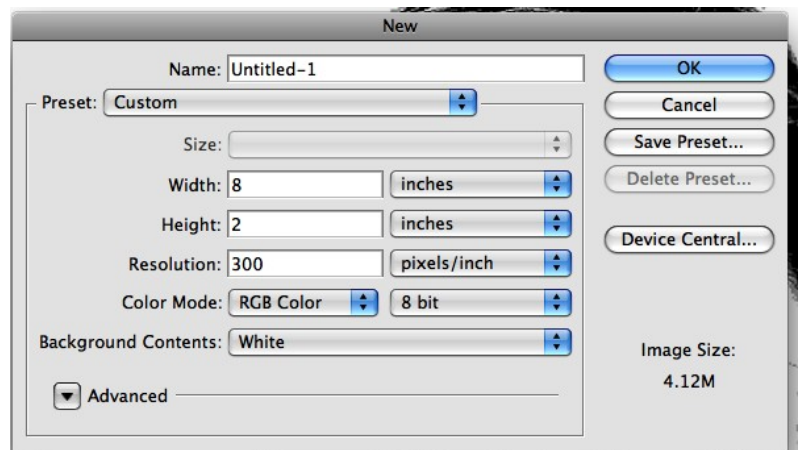


## Creating a value scale

Using the different word lists that you created, you'll create a value scale.

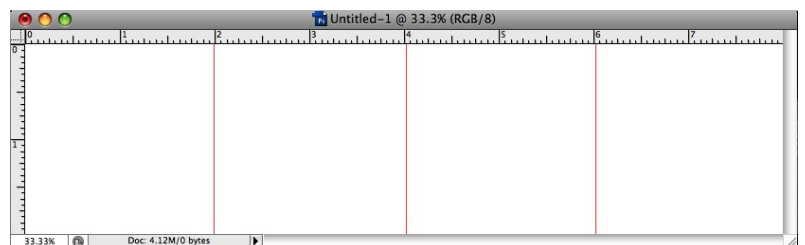
Open a new document  
The width should be 8 inches and the height should be 2 inches.

Resolution 300 dpi.



## Make guidelines

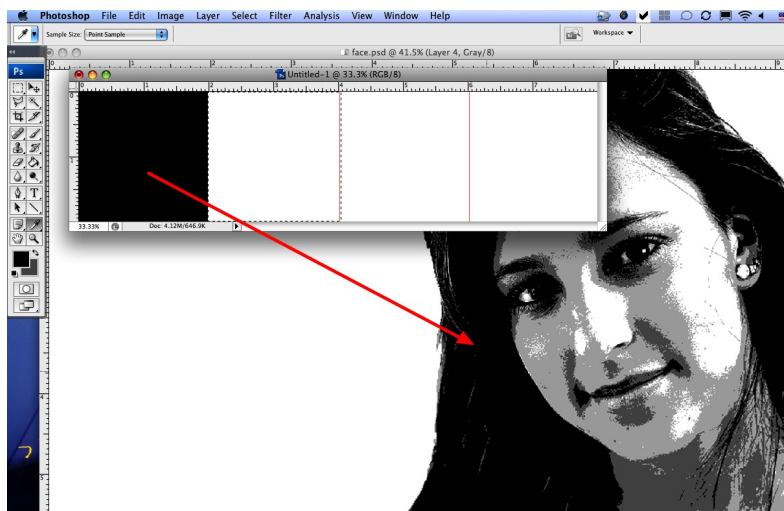
Pull out guidelines and mark every 2 inches



## Fill in with the different values from your portrait.

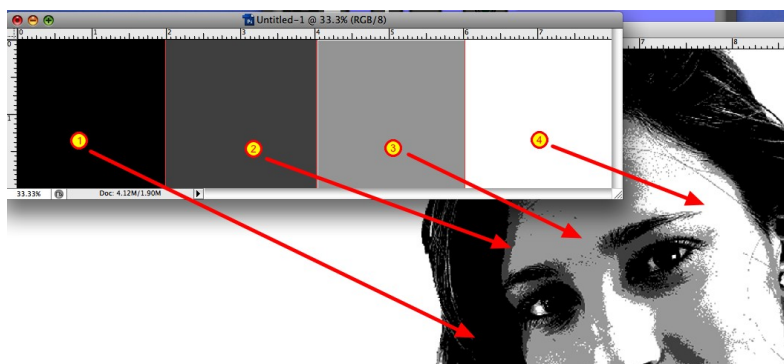
Using the eyedropper, select the darkest color from your portrait.

Select the first box (use the rectangular select tool) and fill the box with the dark color.



## Create all 4 values

Continue filling the different sections of the value scale with the values from the portrait.

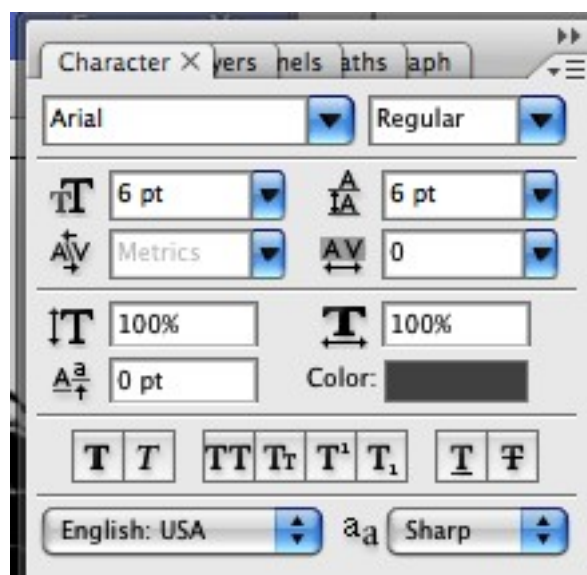


## Filling the value squares with words

Start with your darkest value square.

Choose a font style. The size of the font should be 6pt.

The color of the font should be the color of the next value box.



Start typing in the words from your "describe" list.  
 When you get to the edge of the value box, click return and go to the next line.



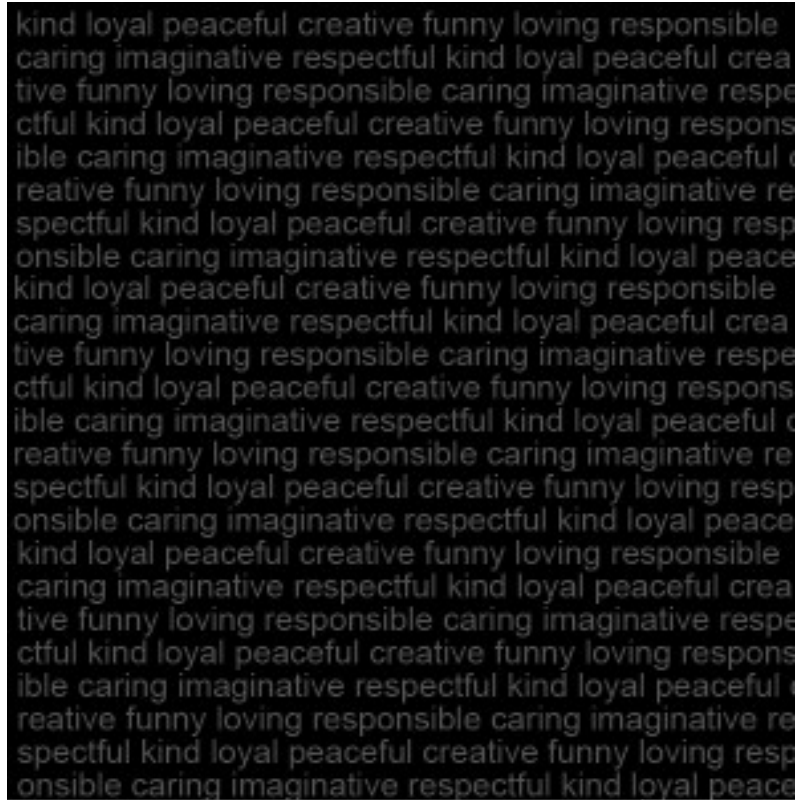
Continue typing the words, over and over, until you get to the bottom of the square.

Continue this process, going to the next value square, choosing a font size of **8pt** this time. For the font color, use the color of the next value square (light gray) Use the words from your family and friends list to fill in this square

**For the 3rd square**, use a **10pt. font**, and the white color for the lettering. Type in the words from your "likes" list.

**For the 4th square**, use a **12pt font** and the light gray color from the previous square.

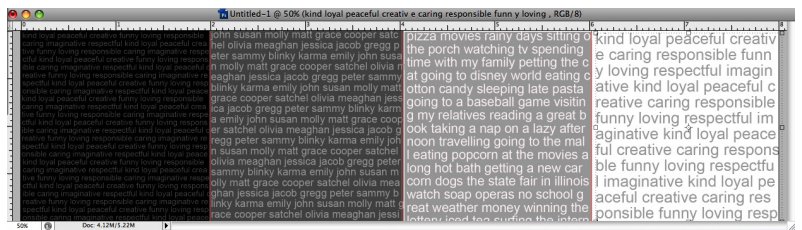
Type in the words from your "describe list" to fill in this square.



Your value scale should look something like this.

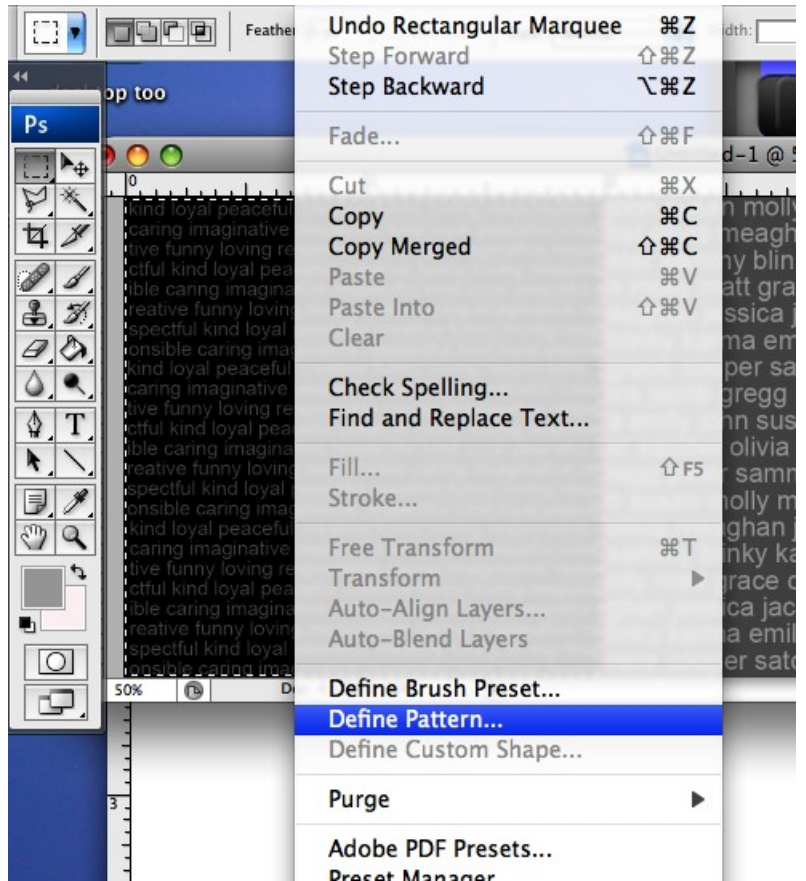
Flatten your image and save it as yourname.valuescale.jpg

Put it in the teacher drop box.

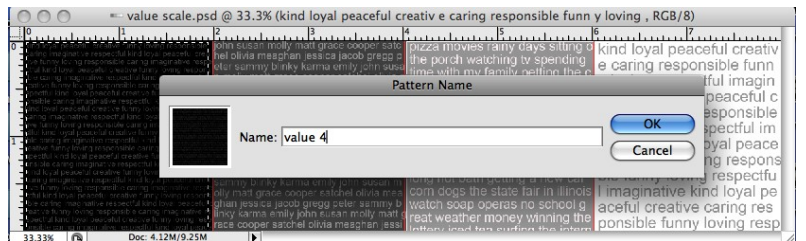


Using the rectangular select tool, select the first square on your value scale.

Go to Edit>Define Pattern



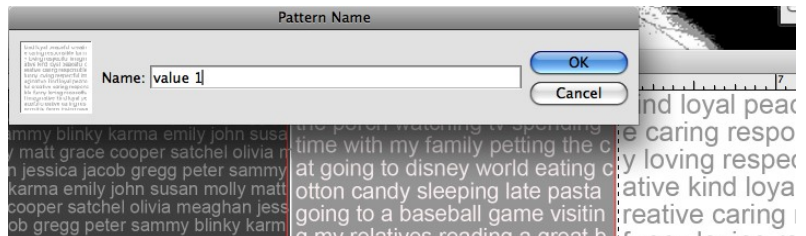
Name the pattern **Value 4** and then click OK.



Use the select tool to select the next value square.

Go to Edit>Define Pattern

Name the pattern **Value 3** and then click OK.



Use the select tool to select the 3rd value square.

Go to Edit>Define Pattern

Name the pattern **Value 2** and then click OK.

Use the select tool to select the last value square.

Go to Edit>Define Pattern

Name the pattern **Value 1** and then click OK.

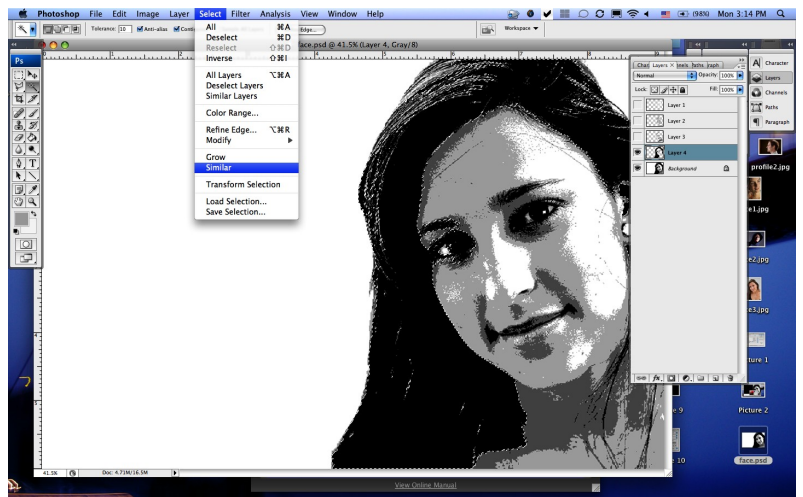
**Save and close your value scale.**

**Go back to your portrait.**

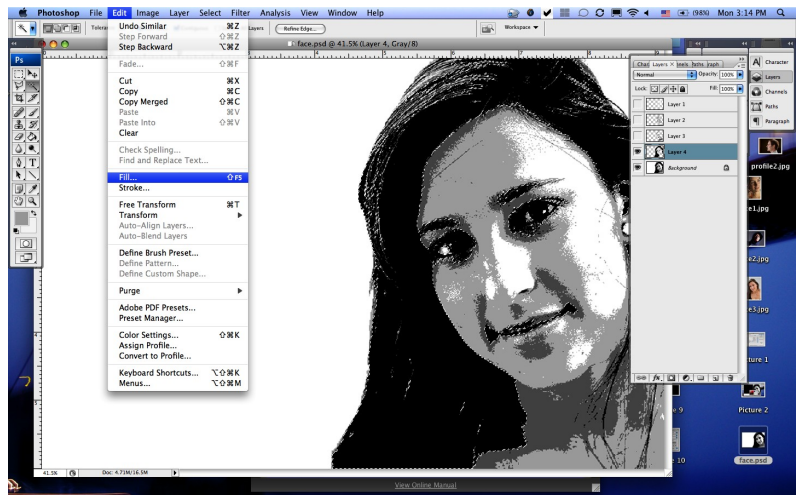
Go to the 4th layer. Use the magic wand to select one of the dark areas.

Then go to **Select>similar**.

You'll see that the rest of the black areas will be selected as well.



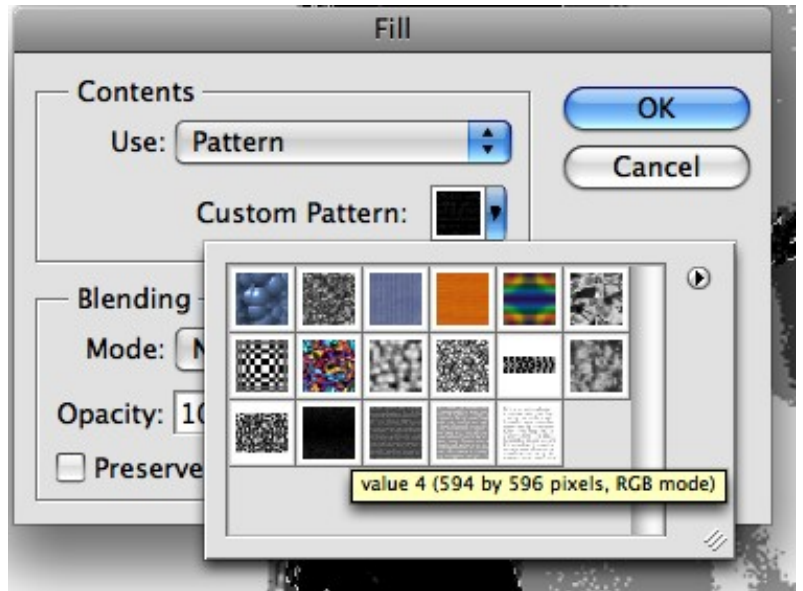
Go to Edit>Fill



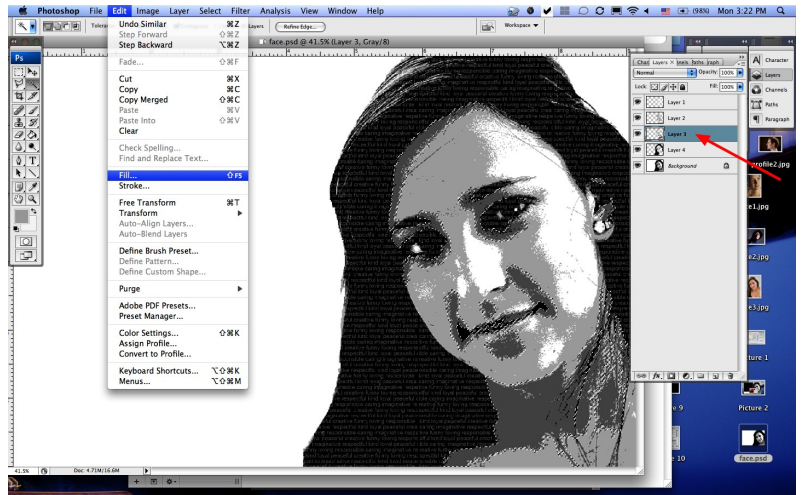
When the fill window opens, choose pattern>custom pattern.

Let your cursor hover over the last 4 patterns on the screen. Choose the one that is named **value 4**.

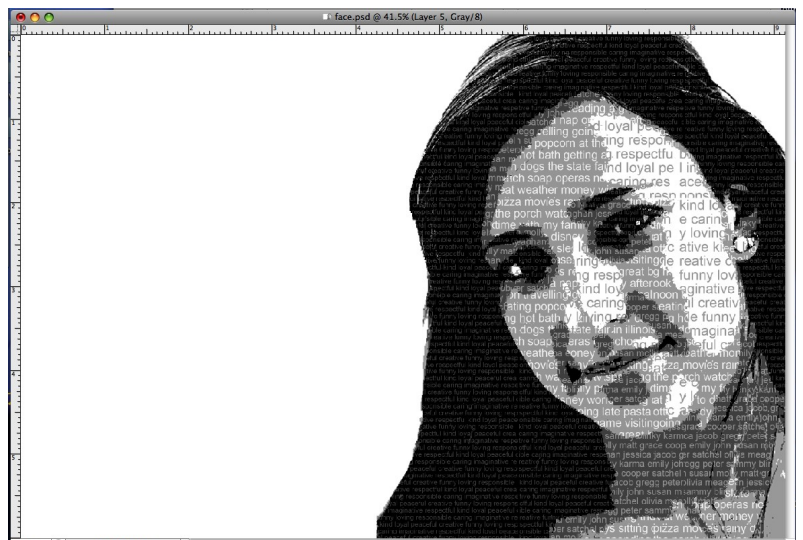
Click OK.



Now select the next layer and do the same thing. This time, fill the selected area with your **value 3** pattern.



Continue selecting and filling until all of the values are filled in.



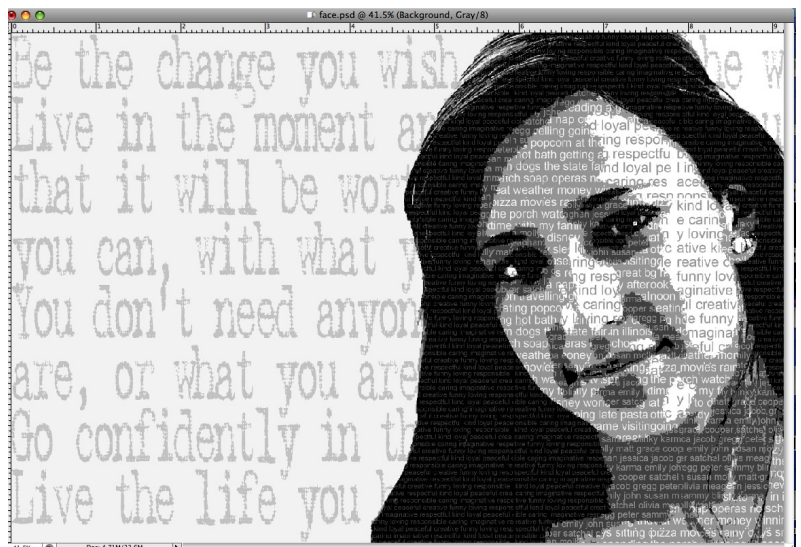
## Filling in the background

Use your text tool and type in your "quotes" on a layer just above your background layer.

Use a large font and fill in the entire background with your quotes.

You may wish to change the opacity of this layer to make the quotes a bit lighter.

Flatten your image and save.



# Express Yourself

---

## Project Rubric

Element	Possible Points	Points	Comments
<b>Editing</b> <ul style="list-style-type: none"><li>- cropping of photo</li><li>- color match</li><li>- cropping of photo</li><li>- background blend</li></ul>	25		
<b>Design Principles</b> <ul style="list-style-type: none"><li>- alignment</li><li>- contrast</li><li>- proximity</li><li>- typography</li></ul>	25		
<b>Content</b> <ul style="list-style-type: none"><li>- creative</li><li>- appropriate</li><li>- properly placed</li><li>- meet min. requirements of the number of words and quotes.</li></ul>	25		
<b>Professionalism</b> <ul style="list-style-type: none"><li>- clean cropping</li><li>- clear photo</li><li>- management of layers</li></ul>	15		
<b>Effort</b>	10		
<b>Total</b>	100		